

# Rotary



# Club of Blytheville

## Club Meeting

Blytheville  
Meets at Blytheville  
Country Club  
2201 N Sixth Street  
Blytheville, 72315  
Time: Thursday at  
12:00 PM

## Club Leaders



[Diana L. Holmes](#)  
President



[Loyd \(Randy\) Lemmons](#)  
President-Elect



[Holly Jo Engle](#)  
Secretary  
Treasurer  
Service Projects Chair



[Lowell Walters](#)  
Vice President



[Billie Bowman](#)  
Club Director



[Sally Sullivan](#)  
[Cooke](#)  
Public Image Chair  
Membership Chair



[David Lyttle](#)  
Club Director



[Tracey Ritchey](#)  
iPast President

## Account Leaders

Brian Rega  
District Governor

## Who has the program this week?

March 6 (Tracey Ritchey) Mississippi County Juneteenth Celebration – Dr. Valencia Andrews-Pirtle and Dr. Anes Abraham

March 13 (Tracey Ritchey) Mississippi County Regional Chamber of Commerce Leadership Class

---

Seeking Paul Harris Fellow nominations! Know a Rotarian or non-Rotarian whose 'heart and hands' embody Rotary's **Service Above Self**? Share your suggestions!

---

## PROPOSED MEMBER - Tammy Winstead

**Proposed by Sally Cooke**, Tammy, the owner of TrueLove Designs, LLC in Blytheville, is passionate about community engagement and giving back. A dedicated volunteer in local schools, she seeks a space where she can make a meaningful impact and stay connected to the community.

---

---

## Last Week's Program

Thursday, February 27th, 2025



**GIVE HOPE. GIVE LIFE.**

Michelle Karin  
Oglesby  
DG-Elect

George Matthew Buie  
DG-Nominee

Michelle Blasengame  
Assistant Governor

Will Branch  
Assistant Governor

King Casbeer  
Assistant Governor

Sally Sullivan Cooke  
Assistant Governor

Anthony D. Ester  
Assistant Governor

Linda M. Hall  
Assistant Governor

Mary Ann Hargraves  
Assistant Governor

Charles C. Harris  
Assistant Governor

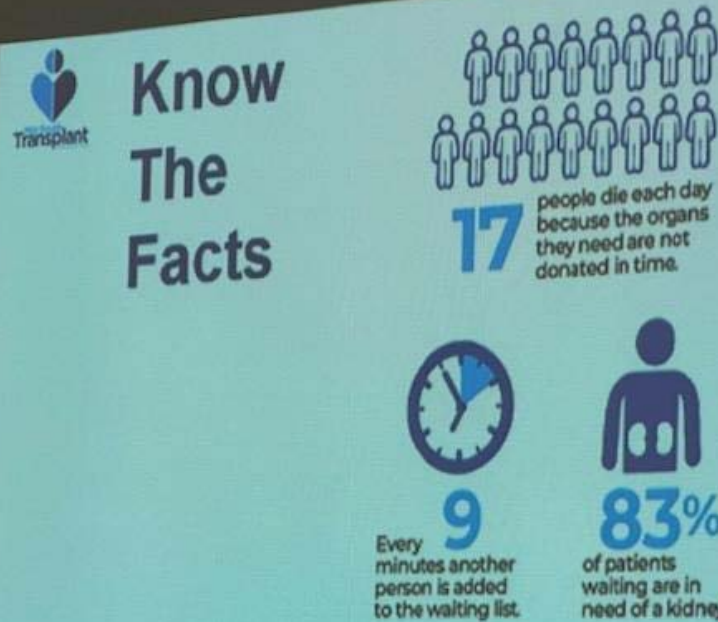
Rena Kelley  
Assistant Governor

Erin Michelle Kerley  
Mathews

Assistant Governor

T Lucas Minton  
Assistant Governor

Kelly E. Rodgers  
Assistant Governor



### **Birthdays**

Mary Gay Shipley  
March 8th

Peggy Lemons  
April 3rd





The Blytheville Rotary Club is participating in an area-wide Shoe Drive. This year we are collecting pairs of shoes for: **SHOES FOR ORPHAN SOULS**.

The shoes will go to vulnerable children in the United States and around the world. This year, the designated countries are Kenya, Peru, and the Dominican Republic. Having proper shoes promotes health, prevents disease, and gives access to education where shoes are required to attend school.

The shoes are to be closed toe, male and female, NEW shoes, size 0 to size 14. A suggestion is to monitor the clearance aisles at Walmart, Target, Dollar General, Family Dollar, Big Lots, Kohls, etc.

The collection is from now to March 15, 2025.

For shoe pick-up, contact Randy Lemmons, Shoe Coordinator for Blytheville Rotary Club at email: [randy.lemmons@fibtby.com](mailto:randy.lemmons@fibtby.com) or text/phone 870-604-4940.

Or, if you are interested in making a cash donation, the Rotary Club will purchase the shoes. The check is payable to the Blytheville Rotary Club, PO Box 1303, Blytheville, Arkansas 72316. In the memo, denote "Shoes for Orphan Souls".




**Rotary Pancake  
Breakfast  
Fundraiser**

**March 15th**  
**8:00-Noon**

**Immaculate Conception Catholic  
Church**

**Price: \$10.00**  
**Children 5 and under: Free**

Stop by this week's meeting to add your name to the sign-up sheet for the Rotary Pancake Breakfast Fundraiser! Whether you're



available to help on Friday (3/14), Saturday (3/15), or both, we need your ticket-selling energy—extra tickets are up for grabs. Plus, check out Rotary-branded attire at [Russell-Hampton](#) to wear at the fundraiser!

---